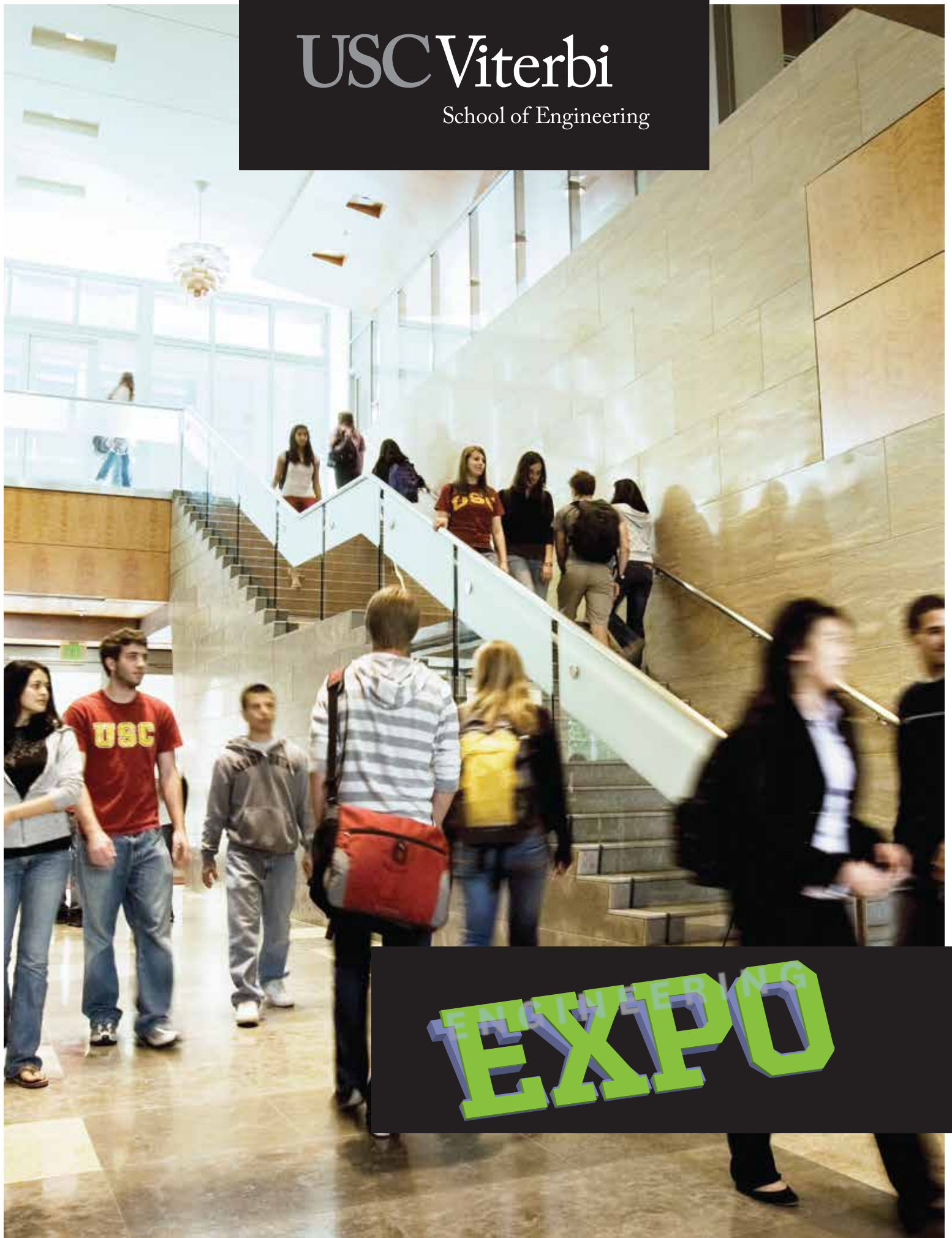


USC Viterbi

School of Engineering



ENGINEERING
EXPO

Welcome to the EXPO

Today is your day to learn everything you possibly can about the USC Viterbi School of Engineering.

Lab Tours will depart from the south patio (Be sure to grab your tickets early). Some labs in the building will be open throughout

the afternoon and are scattered throughout the building. Micro-Seminars will take place in our first floor classrooms. Student organizations are showing off their projects and accomplishments as part of a fair on the first and second floors.

Get your questions answered by an admission counselor near the staircase on the first floor and enjoy a snack from our cafe in your free time.

 #ViterbiEXPO

Join us in the conversation on Twitter. Ask questions, share your photos, videos, comments and more!

Use #ViterbiEXPO for today's activities and follow the conversation for a few surprises as well!

Student Groups

Meet a ton of students as they represent their organizations and discuss projects on which they are currently working

1st FLOOR

Associated Students of Biomedical Engineering
American Institute of Chemical Engineers
Institute of Industrial Engineers
Institute of Electrical and Electronics Engineers
American Society of Civil Engineers
Construction Management Association of America
Earthquake Engineering Research Institute /
Southern California Earthquake Center
Engineers Without Borders
Illumin
KIUEL Programming Committee
National Organization for Business and
Engineering
Sigma Phi Delta - Alpha Chapter

2nd FLOOR

USC AeroDesign Team
American Institute of Aeronautics and
Astronautics
American Society of Mechanical Engineers
Sigma Gamma Tau
Society of Petroleum Engineers
USC Aerial Robotics
USC Racing
USC Rocket Lab
USC Rocket Society
USC Underwater Robotics
Makers of Entertaining Games Association
Women in Computing
Association for Computing Machinery
Alpha Omega Epsilon
National Society of Black Engineers
Society of Hispanic Professional Engineers
Society of Women Engineers

Viterbi Programs

Micro-Seminars will take place in the first floor classrooms reviewing our co-curricular programming as well as support services.

RTH 105

FIRST YEAR EXCELLENCE

Jenny Vazquez-Akim, Associate Director of Student Engagement and Support Programs, and a panel of students will show you how our Freshmen Academies, Academic Advisement, and special programs in our students' first year build a foundation for success as an engineering student.

PROGRAMS START @

1:00 | 2:00 | 3:00

RTH 109

OVERSEAS OPPORTUNITIES

Meet engineering students who have participated in myriad overseas programs and explore your many study abroad options while checking out some of their favorite photos and hearing some of the most memorable moments!

PROGRAMS START @

1:00 | 2:00 | 3:00

RTH 115

SUCCESS AFTER UNDERGRAD

Alumni, Career Services Staff and Graduate School Admission Staff will be on hand to discuss your life after you undergraduate years.

PROGRAMS START @

1:00 | 2:00 | 3:00

Lab Tours & Open Houses

TOURS DEPART @ 1:00 | 1:30 | 2:00 | 2:30 | 3:00 | 3:30
OPEN HOUSES ARE AVAILABLE THROUGHOUT THE DAY

All tours depart from the Ronald Tutor Hall Courtyard on the south side of the building. Please refer to the map below to find departure points. Capacity for each tour is limited and tour passes are required. Retrieve passes for each tour ahead of time at the departure points. There are no tickets or scheduled times for labs marked as Open Houses. Feel free to explore those locations directly, however be mindful of the capacity of the lab as the day goes on.

A STRUCTURAL ENGR. LAB
 Destructive and non-destructive testing of building components and materials. Tours will receive an overview of test equipment and witness a live tensile test. **cap: 15/tour***

B COMBUSTION & FUELS
 Characterization of the combustion properties for fuels used in transportation and power generation including biofuels and conventional fuels. **cap: 15/tour**

C MEDICAL DEVICE DEVELOPMENT
 Treatments for sensorimotor disabilities by combining quantitative models of physiology with electronic technology. **cap: 20/tour**

D IMAGE PROCESSING LAB
 Demo of various image processing techniques and graphics data compression methods. **cap: 15/tour**

E VISION PROCESSING LAB
 Retinal neuroengineering to understand vision and fight blindness. **cap: 10/tour***

F ENGINE LAB
 Automotive engine research aimed at increasing gas mileage and reducing pollutant formation. **cap: 10/tour**

G VIZ LAB
 Atomistic simulations of materials using high performance computing and visualization. **cap: 20/tour**

H WATER QUALITY ENGINEERING
 Research is conducted on different aspects of water quality science and engineering to provide safer and cleaner drinking water. **cap: 10/tour***

I SHOCK WAVE LAB
 Study of shock wave focusing in fluids and gases, material behavior under shock loading and high velocity impact **cap: 25/tour**

J ASTRONAUTICAL ENGR. LABS
 Experimental facilities regarding rockets and astronomical plasma physics. **cap: 25/tour**

OPEN HOUSES:
[PROCEED DIRECTLY TO THE LOCATION](#)

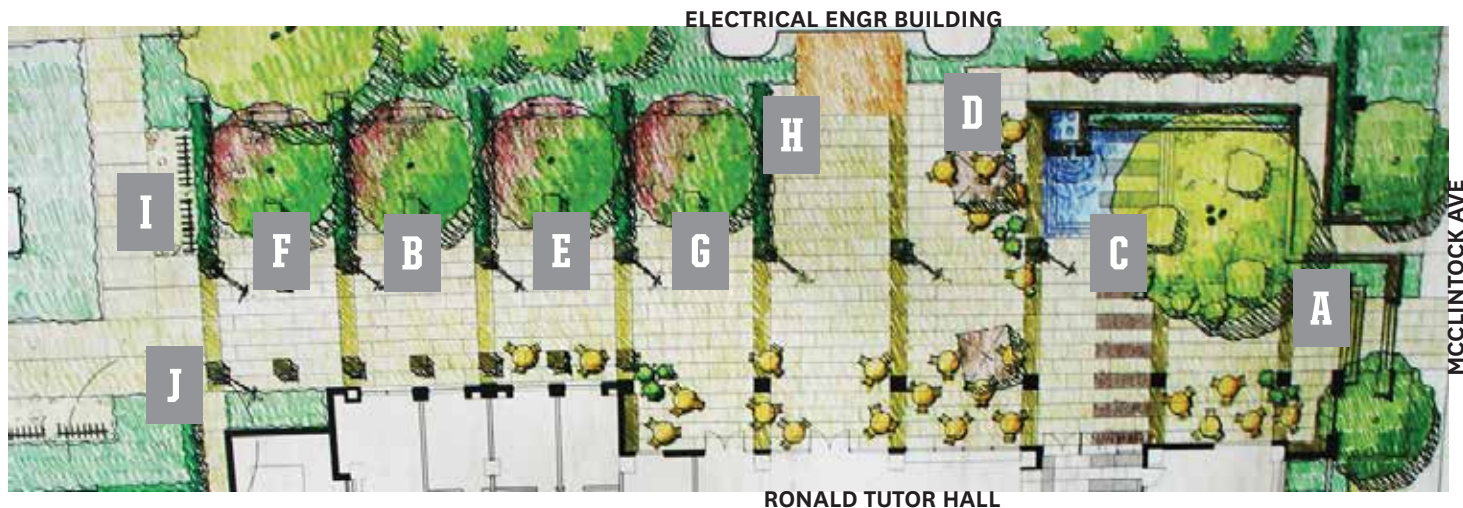
GAMEPIPE LAB: RTH 321
 Full game production process, building 3D models, motion capture, game animation, game engine development & utilization, game design & prototype development. **cap: 40**

DIGITAL MANUFACTURING: RTH 319
 3D printing devices and testbeds developed inhouse. **cap: 10**

CiSOFT: RTH 324
 USC-Chevron Center for Interactive Smart Oilfield Technologies. **cap: 25**

BIOMIMETIC PHASE INTERFACES: RTH 521
 Multiphase liquid flows to study biomembrane physiology and manufacture nanoparticles. **cap: 10**

** Not accessible via wheelchair*





Thank you for joining us today. Please feel free to contact us at anytime if you have further questions or need more information

viterbi.usc.edu/admission



viterbi.admission@usc.edu



[/ViterbiAdmission](https://www.facebook.com/ViterbiAdmission)



[@USCViterbi](https://twitter.com/USCViterbi)



Get even more info about student life through our blogs, videos, live chats, tweets, and more at Viterbi Voices!

viterbivoices.usc.edu



viterbi.student@usc.edu



[/WeAreVSA](https://www.facebook.com/WeAreVSA)



[@ViterbiStudent](https://twitter.com/ViterbiStudent)



USC University of
Southern California